

Healthy Neighbourhoods

Karen James
CEO, Tameside & Glossop Integrated Care
NHS Foundation Trust

January 2017

System savings can be derived in four ways

Creating
efficiencies in
delivery and
commissioning

People living
healthier lives
and therefore
using less
resource

People choosing
to transact
differently

People with
ongoing care
and support
needs managing
conditions
better

- Three out of the four areas identified above are not rooted in the system, but in people's homes, their lives and their communities.
- Our focus must therefore be on delivering integrated neighbourhood care and support for people that builds on the assets in our communities.

Principles of Integrated Neighbourhood working

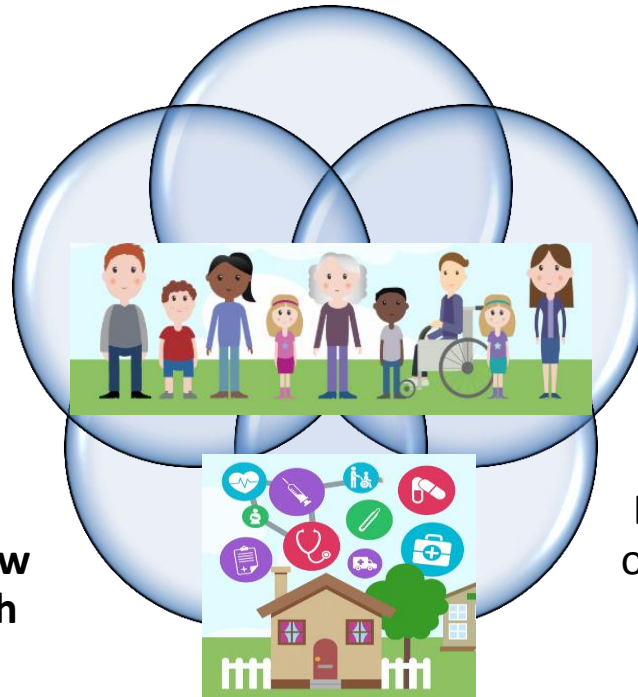
Person centred
approach within the
context of family &
community

Within the
community, **close to
home** from a
flexible asset base

Local services
responsive to local
need

Services that **know
their area & each
other**

Build on the assets
of the community &
intervene early in
an emerging
problem



The Neighbourhood Approach

5 Neighbourhoods
- North , South, East, West
Tameside & Glossop

Multi-disciplinary teams:
Primary care, community,
social care, MH,
voluntary/community sector

Linked to planned and
urgent care systems &
“intermediate” tier

Linked to wider Public
Service Reform Hubs
involving Police, Fire &
Rescue, housing, education,
work & health etc

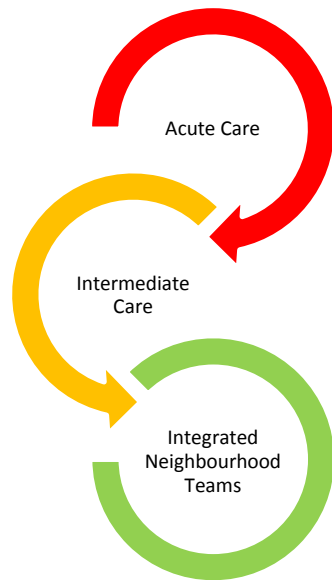
**New Neighbourhood
Director, senior managers
and administrative support
for neighbourhoods as part
of the ICO FT**

**Core offer across all five
neighbourhoods with scope
for local prioritisation once
established and operating
effectively**

**Pro-active, risk based
approach focused on
frequent service users**

**Adopt biopsychosocial
model of care – look at
person’s whole care and
support needs**

Intermediate Tier

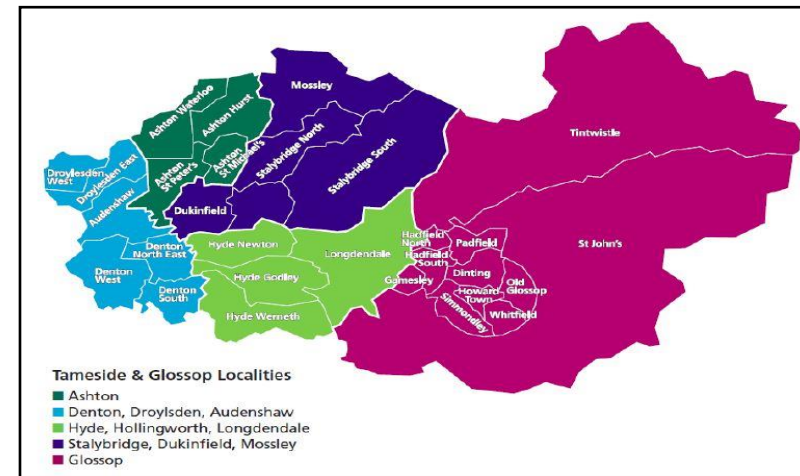


Intermediate Care Services

- Integrated Urgent Care Team
- *Re-ablement*
- *Community bed base*
- *Intermediate care at home*
- *IV Therapy Services*
- *Long Term Conditions Team*
- *Extensive Care Service*
- *End of Life Teams*
- *Mental Health*
- *Pharmacy*

Extensive Care

- The Extensive Care Service is part of the Neighbourhood **core** offer.
- This will be a targeted wrap-around tailored service to provide care for a risk stratified cohort of patients to reduce unnecessary crisis admissions and hospital attendances.



System Wide Self Care

- **Common areas of social prescribing;**
 - Peer Support
 - Self management education
 - Health coaching
 - Advocacy
 - Support with debt and housing issues
 - Information and advice
 - Community activities
 - Befriending
 - Community transport
 - Complementary therapies
 - Carers' respite



Questions & Discussion